

OPORTUNITATE INVESTITIE- TEREN INDUSTRIAL,
CU CONSTRUCTII DIVERSE - GHERLA
ID: P46583

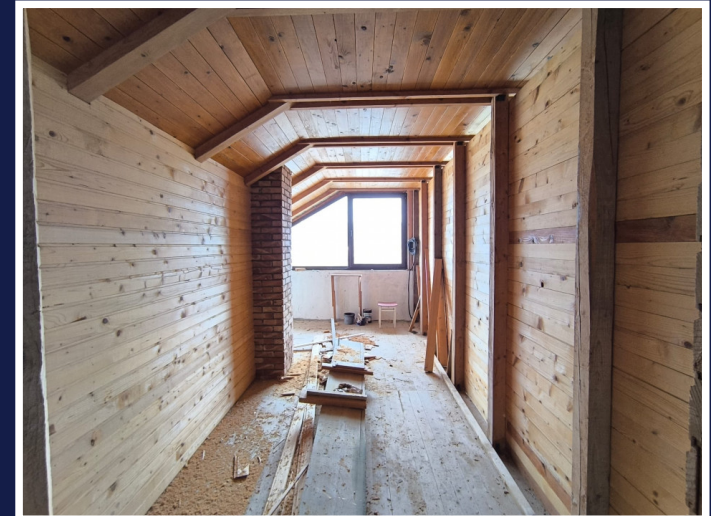
DE VANZARE



Teren intravilan

Suprafata: 4191
m²

Front: 52 m²



PERSOANA DE CONTACT: RADU POP

TEL.MOBIL: 0727.722245

EMAIL: office@weltimobiliare.ro

