

**SPATIU GRADINITA-CRESA 450MP CU  
GRADINA, COMPLEX REZIDENTIAL  
BORHANCI**

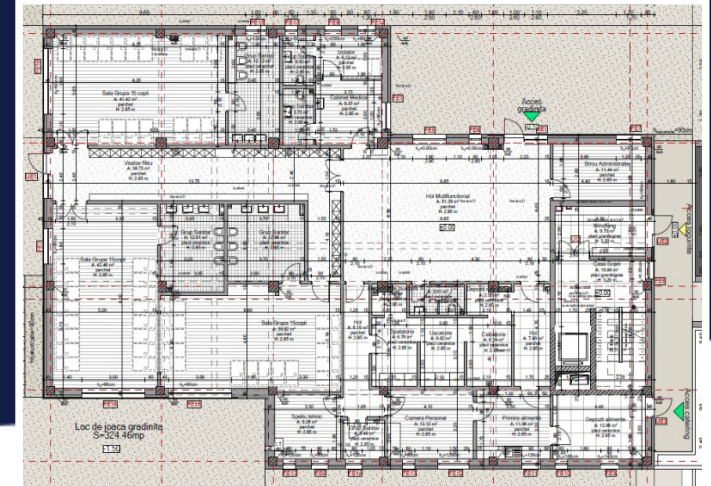
**DE INCHIRIAT**



**Pret: 5 000 €/mois**

**Supr. utila: 450 m<sup>2</sup>**

**Nr. incaperi: 5**



**PERSOANA DE CONTACT: COTLIN BONTE**

**TEL.MOBIL: 0799.994041**

**EMAIL: [office@weltimobiliare.ro](mailto:office@weltimobiliare.ro)**

